

ESCAPE TO TAMBORINE MOUNTAIN

YOUR HINTERLAND

Visitor Guide



things to do
where to stay
what to explore
food & drink

EscapeToTamborineMountain.com.au

in the Gold Coast Hinterland



ATTRACTIONS



GERMAN CUCKOO CLOCK



NEST
www.clocks.com.au

- Cuckoo Clocks
- Grandfather Clocks
- Mantel & Wall Clocks
- German Souvenirs
- Clock Repairs



OPEN 7 DAYS 10AM - 4PM

143 Long Road, Tamborine Mountain QLD 4272
Ph: (07) 5545 1334 / info@clocks.com.au



**CAFE
bravo**
THIS IS COFFEE



CAFE BRAVO

135-137 Long Rd, "Gallery Walk", Tamborine Mountain
☎ (07) 5545 0863

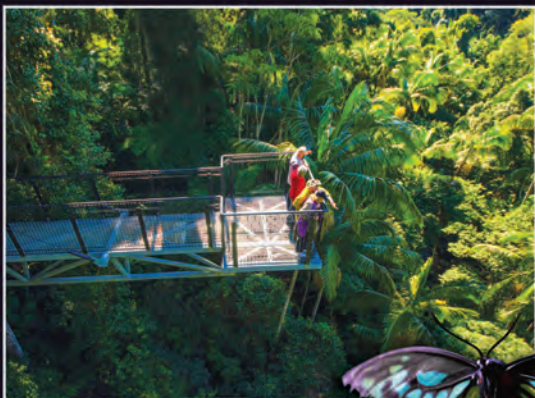


In 1898 the Geissmann family (of Swiss and German origin), originally from Brisbane, built Capo di Monte in North Tamborine. At around the same time the architectural style on the mountain changed from the original Tudor to the Renaissance architecture. Renaissance style places emphasis on symmetry, proportion, geometry and the regularity of parts - Café Bravo is a typical representative of this kind of building. When visiting "Gallery Walk" drop in at the iconic Café Bravo, relax on the deck beneath the Olive Trees, and enjoy everything from boutique coffee to Devonshire tea, cakes, snacks and elegant dining.



B4 24

Explore the rainforest in a different & thrilling way.



- Spectacular Elevated Rainforest Canopy Walk & Skywalk Cantilever • Eco Centre
- The Birdwing Café • Gift Shop • Parking.

Open Every Day (Except Christmas Day)
9.30am to the last walk at 4.00pm (closed at 5pm).

Suitable walking shoes recommended.



tamborine rainforest
Skywalk

333 Geissmann Drive (becomes Tamborine Mt Rd),
North Tamborine, Queensland 4272.

Phone: 07 5545 2222
www.rainforestskywalk.com.au



ATTRACTIONS



FORTITUDE BREWING CO.

165-185 Long Road "Gallery Walk"

☎ (07) 5545 4273 🌐 FortitudeBrewing.com.au



- GREAT FOOD
- LIVE MUSIC ON WEEKENDS
- PRIVATE FUNCTIONS

Beers that are full-bodied, well-balanced and crafted to perfection. Fortitude Brewery is the perfect spot for a lazy afternoon. Delicious food fresh from our kitchen, and free live music on weekends, Fortitude is just the place to enjoy some home-style hospitality.

Please check our website for Opening Hours.



BEARDED DRAGON HOTEL

2-22 Tamborine Mountain Road, Tamborine

☎ (07) 5543 6888 ✉ info@beardeddragon.com.au

🌐 BeardedDragon.com.au 📱 @beardeddragonhotel

A2 76

Enjoy Tamborine's Favourite Pub in the Paddock serving up Casual All Day Dining with food served 7 Days till late, Craft + Local Beer tastings, Live Music, Delicious Cocktails and Chef's Desserts and Blackboard Dining. Visit the friendly Alpacas, Miniature Goats and Pigs, Kids 'big backyard' playground. Join the fun of Live Cane Toad Racing and Crocodile Reptile Shows. A true blue Australian experience, chock a block with interesting antiques and old world memorabilia and charm.

Private Functions spaces and Tour Groups 2 - 500+ persons, Accommodation Stay and Play Packages, Wedding and Events Specialists, Takeaway Bottle Shop. Look for the Big 1920s vintage windmill and the old Cobb & Co Love Wagon.



The Tamborine Mountain Visitor Information Centre (VIC) is an accredited Visitor Information Centre staffed by helpful locals with a wealth of local knowledge, offering travel information, including free maps, and brochures

Drop in for help during your stay. There is a range of displays of interesting aspects of the Mountain, plus souvenirs and gifts.

OPEN 7 DAYS 07 5545 3200

- Monday to Friday 9.30am to 3.30pm
- Saturday and Sunday 9.30am to 4pm
- closed Christmas day & Good Friday
- open 1/2 day on Anzac Day 12.30pm to 4pm

Doughty Park, Cnr Geissmann Drive & Main Street, North Tamborine



	Attractions	2 – 11
	Eating Out	12 – 16
	Tours and Transport	17 – 18
	Wineries / Distilleries / Breweries	19 – 21
	TAMBORINE MOUNTAIN MAP - CENTREFOLD	22 – 25
	Gallery Walk	26 – 29
	Nursery & Café, Bottle Shops, Auto Services	30
	Street Directory	31
	Accommodation	32 – 35
	Weddings	36
	Wellness	36
	Art Galleries	37
	Markets	38 – 39
	Waterfalls	40
	Lookouts	41
	BBQs / Parks / Playgrounds	42 – 43
	Tamborine Mountain Walking Trails	44 – 47



Escape to your Hinterland – Tamborine Mountain

Disappear into the cooler, green rainforests of Tamborine Mountain and surrounds. The mountain climate makes for an ideal escape from the heat of the coast. Because of its altitude, Tamborine Mountain has a much cooler and less humid climate than the Gold Coast & Brisbane, situated high on the Mountain plateau.

Wander the walking trails, discover the hidden delights of eclectic boutique shops, and visit the wineries, breweries and distilleries on offer. You can find locally made clothing and jewellery, ceramics, gemstones, and local/Indigenous art. There's lots of fresh local produce like coffee, flowers, honey, as well as organic avocado and rhubarb to purchase.

Explore the rainforests and national parks on foot, with a choice of more strenuous hikes on offer. The waterfalls are at their best during the wet season.

Tamborine Rainforest Skywalk will take you high above the rainforest canopy, the Glowworm Cave will show you the mysteries of nature. Discover Mountain-inspired beer, wine and gins, and locally grown coffee.

Sit and enjoy great food or simply wander down the famous Gallery Walk.

Discover more of this charming Mountain, just an hour south of Brisbane, nestled in the Gold Coast Hinterland.

Come up and stay awhile!

[#tamborinemountain](#)
[#discovertamborinemountain](#)
[#escapetotamborinemountain](#)
[#escapetoyourhinterland](#)





ATTRACTIONS



EAGLE HEIGHTS HOTEL

Enjoy the View



EAGLE HEIGHTS HOTEL

1683 Tamborine Oxenford Rd, Tamborine Mountain Qld 4272

☎ (07) 5545 3388 ✉ info@eagleheightshotel.com.au

🌐 EagleHeightsHotel.com.au

A8 ¹

Amazing Views from our Beer Garden!

- Accommodation
- Bar and Bistro
- Gaming
- Bottle Shop
- Tamborine Liqueur Tastings
- Events and Parties
- Breakfast Sat & Sun 8am
- Panoramic Views
- Families Welcome
- Courtesy Bus



The Polish Place



THE POLISH PLACE

333 Main Western Rd, Tamborine Mountain Qld 4272

☎ (07) 5545 1603 ✉ info@polishplace.com.au

🌐 PolishPlace.com.au

H2 ⁵⁸

Polish Restaurant – Cottages – Gallery – Coffee – Vodka A true Polish Experience...

With 180° views overlooking the Great Dividing Range, it's the ideal location to experience luxury accommodation, scrumptious Polish cuisine, beers and vodkas. Wake up to breathtaking views and abundant birdlife. Set the woodlog fire, relax in your double spa and enjoy the stunning sunsets over the mountains.



GLOW WORM TOURS

DAYTIME & TWILIGHT
A CONSERVATION INITIATIVE

EVERYDAY FROM 10am
TWILIGHT TOURS every Saturday with last tour @6pm
CHECK WEBSITE FOR TOUR DEPARTURE TIMES



BOOK
YOUR TOUR
ONLINE
NOW



GLOW WORM TOURS

Cedar Creek Estate 104-144 Hartley Road,
Tamborine Mountain Qld 4272 ☎ (07) 5545 1666

✉ glowworms@cedarcreekestate.com.au

🌐 tamborineglowworms.com.au



Come with us on a guided glow worm tour...

Through our purpose-built cave filled with thousands of glowing glow worms! Over the course of a 30 minute guided tour, you'll see glow worms up close and learn all about their life cycle and behaviour. Tour tickets can be purchased online. Open daily from 10am with café on site for dine in and take aways.



ATTRACTIONS



Tamborine Rainforest Skywalk

Exploring the Rainforest Canopies...

Set in 30 private acres of magnificent rainforest alongside 1km of tumbling creek and rock pools - explore the canopy in a different and thrilling way!

📍 333 Geissmann Drive, Tamborine Mountain
☎ (07) 5545 2222 or 5545 2333
🌐 RainforestSkywalk.com.au



Tamborine Glassblowing

• Make your own Blown Glass pieces with as much, or as little assistance as you need • Courses available include, Mosaics, Glass Coaster Class, Art Glass Bowl, or Bead Making • View Glassblowing, and browse our gallery • By appointment

📍 17 Nicolet Drive, Tamborine Mountain
☎ 0437 115 779
🌐 TamborineGlassBlowing.com.au



Tamborine Mountain Heritage Centre

Dedicated to the preservation and display of Tamborine Mountain history. From timber getting to farming, all housed in the Machinery Hall, Dairy, Blacksmith Shop, General Store, Slab Cottage, Pioneer Hall and School House.

Open 10am to 3pm Saturdays, Sundays and Public Holidays.

📍 53 Wongawallan Road, Tamborine Mountain
☎ (07) 5545 4010 📧 tmheritagecentre@gmail.com
🌐 TMHeritageCentre.com.au



Fox and Hounds Country Inn

Authentic British Ales and an interior imported all the way from the UK, this cosy pub truly is the Englishman's home away from home. Traditional English food like Toad in the Hole, Beef and Guinness Pie, weekend Roasts and Yorkshire Pudding.

Mon-Thurs: 11AM-3PM re-open 5PM-9PM Fri-Sun: 11AM-9PM

📍 7 Elevation Drive, Wongawallan Qld 4210
☎ (07) 5665 7582
🌐 FoxAndHounds.net.au



German Cuckoo Clock Nest

A true icon on Gallery Walk... Largest variety of Grandfather Clocks, Cuckoo Clocks, Wall Clocks, Mantel Clocks and contemporary timepieces. Huge range of German Souvenirs - Cow Bells, Beer Steins and Christmas articles. Expert service and repair. Open 7 Days 10am to 4pm.

📍 143 Long Road "Gallery Walk"
☎ (07) 5545 1334
🌐 Clocks.com.au



Glow Worm Tours

A Magical Underground Adventure... Be guided through this magical man-made cave filled with thousands of Glow Worms, absolutely stunning. Tours run every half hour 7 days a week. Open Daily from 10am to 4pm.

📍 104-144 Hartley Road, Tamborine Mountain
☎ (07) 5545 1666
🌐 TamborineGlowWorms.com.au



Club Tamborine

The heart of the mountain... Barefoot bowls, Bistro, TAB, Keno, Pokies, Functions and events. Open 7 days a week from 10am. Bistro open for Lunch Wednesday to Sunday. Lunch and Dinner Thursday to Saturday. Hope to see you at the Club soon.

📍 6-12 Beacon Road, Tamborine Mountain
☎ (07) 5545 1308
🌐 ClubTamborine.com.au





MUMMA DUCK'S SWEETS & TREATS

149 Long Road, 'Gallery Walk'

🌐 MummaDucks.com.au

🌐 TMRockCandy.com.au

70 VARIETIES OF ROCK CANDY

Choose from our large range of old fashioned favourites, from bo-peeps to butterballs, or try something new... delicious sherbets, coffees, caramel or fizzy cola.

There's something to tempt everyone!



TAMBORINE MOUNTAIN GOLF CLUB

Amazing location, 500 metres above sea level, overlooking the Gold Coast. Acclaimed 9-hole, 18-tee course is a delight to play any time of the year.

Visiting golfers are welcome to experience our hospitality and challenge the 3, 4 and par 5 holes, then master our elevated bentgrass greens.

5 Coomera Gorge Drive,
Tamborine Mountain

☎ (07) 5545 1788

🌐 TamborineMountainGolfclub.com



TAMBORINE GLASSBLOWING

17 Nicolet Drive, Tamborine Mountain

☎ 0437 115 779

🌐 TamborineGlassBlowing.com.au

- Experience the art of glassblowing
- Make your own Blown Glass pieces with as much, or as little assistance as you need
- Courses available: Mosaics, Glass Coaster Class, Art Glass Bowl, or Bead Making
- View Glassblowing, and browse our gallery
- By appointment



TAMBORINE MOUNTAIN HERITAGE CENTRE

53 Wongawallan Road, Tamborine Mountain Qld 4272

☎ (07) 5545 4010 ✉ tmheritagecentre@gmail.com 🌐 TMHeritageCentre.com.au

Come and see the real thing! The Pioneer History Museum displays examples of the various industries which have been carried out on the mountain from timber getting to farming. The displays are housed in the Machinery Hall, Dairy, Blacksmith Shop, General Store, Slab Cottage, Pioneer Hall and School House. Open 10am to 3pm Saturdays, Sundays and Public Holidays.





EATING OUT / RESTAURANTS

Enjoy your meal... Tamborine Mountain is home to many wonderful eateries, catering for all budgets and tastes. Fresh local produce grown in rich volcanic soils, prepared with care and skill is the secret to your culinary delights. Pubs and bistros, take-aways and pizza kitchens, cafes and health food stores, restaurants and cake shops all invite you to enjoy the delicious things life has to offer.



Birchgrove Nursery Café

An unforgettable garden experience hard to find elsewhere! ... Birchgrove is a typical English Country Garden Centre set in picturesque Tamborine Mountain, offering a unique garden centre café, morning and afternoon teas, light lunches, award winning organic coffee and leaf teas. Open 7 days from 8.30am to 4pm.

📍 38 Alpine Terrace, Tamborine Mountain
☎ (07) 5545 1042
🌐 BirchGroveNursery.com.au



Gabby's Café

The locals' licensed café-bar at St Bernard's shopping village. Beautiful views, great coffee and honest, local produce in a relaxed, cool atmosphere.

📍 8 Siganto Street, Tamborine Mountain
☎ (07) 5545 2332
🌐 GabbysCafeBar.com.au
📘 www.facebook.com/gabbyscafe.bar



Pethers Rainforest Restaurant

Enjoy superb cuisine overlooking our own pristine rainforest seated by a large open fireplace. Try the renowned degustation menu on Thursday-Saturday nights or our excellent 3 course dinners on Monday and Tuesday. With the freshest produce sourced locally on Tamborine Mountain or elsewhere in the Scenic Rim, this is an experience not to be missed.

📍 28B Geissmann Street, Tamborine Mountain
☎ (07) 5545 4577 ✉ retreat@pethers.com.au
🌐 www.Pethers.com.au



Gallery Café

A true icon on "Gallery Walk". The internal timber architecture is breathtaking, seating up to 70 visitors, serving light lunches, delicious cakes, and a whole lot more. Idyllic garden seating makes for an ideal meal outside - enjoy the sunshine and soak in the atmosphere. Open 7 days a week 8am to 5pm

📍 1/112 Long Road, 'Gallery walk'
☎ (07) 5545 1132
📘 www.facebook.com/Gallery-Cafe-Restaurant



Belvedere Restaurant

Since 1925 on Main Street... Traditional Italian Menu at its best. Home made pasta and wood fired pizza. Authentic Italian Chef Mario from ROMA welcomes you 6 days a week for dinner from 5pm through to 9pm. Closed Sundays.

📍 43 Main Street, Tamborine Mountain
☎ (07) 5545 4063

🌐 www.quandoo.com.au/place/belvedere-restaurant-on-main-86573



Bearded Dragon Boutique Hotel

Tamborine's Favorite Pub in the Paddock!... A gem of good old-fashioned Australian Hospitality, with bars, restaurant, live music, local beer tasting, alpaca feeding, crocodile and reptile show and cane toad racing. Food served all day till 8pm. Breakfast menu available.

📍 2-22 Tamborine Mountain Road, Tamborine
☎ (07) 5543 6888 🌐 BeardedDragon.com.au
📘 @beardeddragonhotel





MASON WINERY RESTAURANT

32 Hartley Road, Tamborine Mountain

☎ (07) 5545 2000

✉ info@masonwinery.com.au

🌐 MasonWines.com.au

Celebrate the Seasons! Discover a truly idyllic vineyard estate restaurant. It provides for an inviting setting for a unique dining experience with panoramic views from the veranda. Mason's fine wines are complimented by contemporary Australian cuisine.

Open Wednesdays to Sundays 11am to 2.30pm.



ST BERNARDS HOTEL

101 Alpine Terrace, Tamborine Mountain Qld 4272

☎ (07) 5545 1177 ✉ stbhotel@bigpond.net.au

🌐 StBernardsHotel.com

Discover the tranquil beauty of historic "St Bernard's Hotel" - paradise made simple!

- Historic Hotel with magnificent views
- Home of "Molly" and "Syrah" the St Bernard Dogs
- Enjoy Spectacular Gorge and Coast Views
- Beautiful Gardens and "Olde World" Ambiance
- Perfect venue for Weddings and Conferences
- Great Meals served for Lunch and Dinner 7 days a week





Eagle Heights Hotel

Alfresco Dining with Views... Open 7 days a week for lunch and dinner, open for breakfast Saturdays and Sundays. Venue includes Pokies and Keno facilities, Garden dining, coffee and cakes. Jumping castle for the kids.

📍 1683 Tamborine Oxenford Rd, Tamborine Mountain
☎ (07) 5545 3388

🌐 EagleHeightsHotel.com.au

A8 1



The Mountain Brew Coffee

Great Coffee, Great Vibes... Excellent tasting coffee made from the freshest premium beans and always served with a smile. We also offer yummy gourmet breakfast and lunch including daily Asian Specials. Try our delicious cakes! Open Mon-Sat 7am to 4pm and Sun and Public Holidays 7am to 3pm.

📍 1/18 Main Street, Tamborine Mountain
☎ (07) 5545 1186

🌐 TheMountainBrewCoffee

D3 34



Cedar Creek Estate - Restaurant & Café

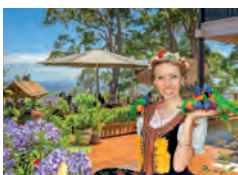
Whether it's a quick bite, an intimate gathering or a larger function, our restaurant is the perfect location for a relaxing lunch. We are open daily from 10am.

📷 CedarCreekEstate 📘 CedarCreekEstateWinery

📍 104-144 Hartley Road, Tamborine Mountain QLD
☎ (07) 5545 1666

🌐 CedarCreekEstate.com.au

F4 47



THE POLISH PLACE

333 Main Western Rd, Tamborine Mountain Qld 4272

☎ (07) 5545 1603 ✉ info@polishplace.com.au

🌐 PolishPlace.com.au

Visit our award-winning Polish Restaurant and enjoy traditional cuisine, Polish Beers and Vodka. Or simply enjoy a coffee and cake in our spectacular outdoor setting, with stunning views and abundant birdlife.

H2 58

SPICE OF LIFE

CAFE ♦ DELI



SPICE OF LIFE CAFÉ DELI

28 Main Street, Tamborine Mountain Qld 4272

☎ (07) 5545 3553 ✉ info@spiceoflifecafedeli.com

🌐 SpiceOfLifeCafeDeli.com

Fine Multicultural Cuisine... Open Every Day 6:30am to 5pm.

- Open for Breakfast, Lunch and Afternoon - Be tempted by our a la carte Menu
- Picnic Baskets - Be spoilt by our Gourmet Selection
- Delicatessen - Be inspired by our mouth-watering Deli

D4 33





TAMBORINE
MOUNTAIN
COFFEE
PLANTATION

COFFEE - KITCHEN - BAR



 three little pigs



THREE LITTLE PIGS BAR & BISTRO

13 Main Street, Tamborine Mountain Qld 4272

☎ (07) 5545 4484

🌐 three-little-pigs.com.au



Outstanding service, innovative and comforting food

It's the perfect place for relaxing and catching up with friends and family, or just to spoil that special someone.

Using fresh locally sourced ingredients, our fare reflects our passion, knowledge and love of fine food and fabulous wine.

OPEN HOURS: Lunch 12–2.30pm Wed – Sun,

Dinner 5.30pm to 8.30pm Wed – Sat. Not Open Public Holidays

Reservations recommended (07) 5545 4484



CLUB TAMBORINE

6-12 Beacon Road, Tamborine Mountain Qld 4272

☎ (07) 5545 1308 ✉ admin@clubtamborine.com.au

🌐 ClubTamborine.com.au

The heart of the Mountain

Barefoot Bowls, Bistro, TAB, Keno, Pokies, Functions and Events. Club open 7 days a week from 10am. Bistro open for Lunch on Wednesday to Sunday. Lunch and Dinner Thursday to Saturday. Hope to see you at the Club soon.



MAIN ST. PROVIDORE EATERY & ESPRESSO

Main St Provedore Eatery & Espresso

Deli goods, lunch, dinner by appointment... Specialty products and fine food on Tamborine Mountain. Espresso and house-baked bread, deli-style sandwiches, luxurious salads. Exceptional four course dinners on selected Friday and Saturday evenings.

📍 Shop 1A, 11 Main St, Tamborine Mountain

☎ 0400 458 113 / 0424 125 500

🌐 www.MainStProvedore.com.au



El Burro Cantina

We cook Mexican food that is healthy, fast and delicious. Capture the fun and authentic flavours of Mexico's regional dishes. A fun way to feed the family and catch up with friends. Also, try our classic Mexican Beer home-made Margarita or Sangria.

📍 16-20 Main Western Rd, Tamborine Mountain

☎ (07)5545 4003

🌐 www.ElBurroCantina.com.au



Tamborine Mountain Pasta

OPEN SEVEN DAYS

Lunch 11:30am-2:30pm Dinner 5:00pm-8:00pm

Takeaway and outdoor dining currently available

Includes vegan options

📍 1A, 15 Main St, Tamborine Mountain

☎ (07)5545 3795

🌐 www.facebook.com/tamborinemtpasta





Cork'n Fork

WINERY TOURS



CORK N FORK WINERY TOURS

☎ 0415 454 313

✉ tours@corknfortours.com

🌐 CorkNForkTours.com

The premier local wine tour business of South East Queensland.

Come and join us for a fantastic day out and taste some amazing Queensland products. Let Cork 'n Fork spoil you for the day.



PINEAPPLE TOURS



PINEAPPLE TOURS

☎ 0466 331 232

✉ bookings@pineappletours.com.au

🌐 www.PineappleTours.com.au

📘 www.facebook.com/pineappletoursAU

📷 [instagram.com/pineappletours.com.au/](https://www.instagram.com/pineappletours.com.au/)

Make memories with friends, make friends with wine!

Pineapple Tours is the leading Food and Wine tour company in South East Queensland. With the newest luxury vehicles and highly experienced guides, let Pineapple Tours take you on a memorable experience on one of the many tours that we have available. We are a local, family owned business that operates with sustainability in mind and we can personalise all of our tours to suit your groups needs.

- Winery Tours
- Distillery Tours
- Private Tours
- Brewery Tours
- Rainforest Tours
- Personalised Experiences





TOURS AND TRANSPORT

Getting around Tamborine Mountain...

No matter where you want to go and what you would like to see or do on Tamborine Mountain, arranging transport or a tour to suit your needs is easy. Just make a call or go on-line to check the different options available. To get the most out of your trip why not book one of the many tours on offer, each of them guaranteed to delight.



Bums on Seats Tours

Family Owned and Operated Tour Company. We will go above and beyond, specialising in small group and private tours, let us show you around. We service Tamborine Mountain, and the greater Brisbane region. Private Tours, Wine Tours, Adventure Tours and Airport Transfers.

☎ Tania Kinsey on 0412 988 846
✉ salesqld@bumsonseats.com.au
🌐 BumsOnSeats.com.au



Cork n Fork Winery Tours

Let us drive you to drink...

The premier wine tour business of South East Queensland. We can pick you up with door-to-door service. A variety of tours operate daily.

☎ 0415 454 313
✉ tours@corknfortours.com
🌐 CorknForkTours.com



Pineapple Tours

Make memories with friends, make friends with wine!

At Pineapple Tours, our mission is to provide guests with truly memorable experiences, enabling them to indulge in the best food, wine and adventures that the Gold Coast and South East Queensland has to offer.

☎ 0466 331 232 ✉ bookings@pineappletours.com.au
🌐 PineappleTours.com.au
Find us on Social



Candice's Rainforest Experience

You're surrounded by one of the most diverse ecosystems in the world! Tamborine Mountain is home to over 60% of the Gold Coast's plant life and over 80% of animals. See the rich diversity that makes this place unlike any other.

Book a guided tour today!

☎ 0450 077 917 🌐 CandicesRainforestExperience.com.au
✉ info@candicesrainforexperience.com.au
Find us on Social



Prestige Day Tours

Small Group Tours and Exclusive Private Tours from Brisbane or Gold Coast hotels to stunning destinations throughout South East Qld and Northern NSW. Tours include hotel pickup and drop off by your driver, a luxury Mercedes Benz vehicle and a delicious restaurant lunch.

☎ (07) 3711 6051 or 0414 786 882
✉ info@prestigedaytours.com.au
🌐 PrestigeDayTours.com.au



Beaman's Bus Services

Huge Range of Tours and Charters No matter where you need to go, Beaman's Bus Services can get you there in style and comfort. We cover a wide area from Brisbane, Gold Coast, Scenic Rim and much more. We transport sports trips, school excursions, wine and golf tours, weddings and more.

📍 Jimboomba, Qld
☎ 0405 139 049
🌐 www.beamansbusservices.com.au





CAULDRON ESTATE & DISTILLERY

89-123 Hartley Road,
Tamborine Mountain Qld 4272

✉ hello@cauldrondistillery.com.au

🌐 CauldronDistillery.com.au

Distillery – Vineyard – Bar – Events

Cauldron Estate is an 18-acre property with beautiful established vineyards and lush green meadows perfect for picnics, lawn games or kicking back for an afternoon of R&R. Enjoy our locally made spirits or drinks from the Cauldron Bar – a prohibition-inspired cocktail bar – relish our mountain-inspired 'Bar tucker' and picnic hampers, and even make your own bottle of gin in our distillery to take home.





WINERIES / DISTILLERY / BREWERY

Cheers! Relax and Enjoy! One of the main reasons why more than one million people visit Tamborine Mountain every year is the fact that the Mountain boasts 7 wineries offering a huge variety of wines: whites, reds, sparkling, fortified and everything in between. Add to that some fantastic beers from the Fortitude Brewery, gins from Cauldron Distillery and spirits from TM Distillery – a unique and exciting tasting experience awaits you on Tamborine Mountain!



Mason Winery

Celebrate the season! An idyllic vineyard estate surrounded by magnificent wildlife, fresh mountain air and lush fragrant gardens. Our team will guide you on a journey through Mason's extensive range with styles and varieties to suit all palates. Dedicated to producing top quality handcrafted wines with distinct regional characteristics. Open Wed to Sun 10am to 4pm.

📍 32 Hartley Road, Tamborine Mountain
☎ (07) 5545 2000 🌐 MasonWines.com.au
✉ info@masonwinery.com.au



Tamborine Mountain Distillery

Award-winning manufacturer of Boutique Liqueurs and Spirits. Our artisanal approach and multiple distillations, using an impressive range of natural ingredients and native flora, create smooth and unique flavours. Visit our new location welcoming you with authentic European charm and ambience.

📍 10 MacDonnell Road, Tamborine Mountain
☎ (07) 5545 3452 ✉ info@tamborinemountaindistillery.com
🌐 TamborineMountainDistillery.com



ALBERT RIVER WINERY & RESTAURANT

869 Mundoolun Connection Road, Tamborine QLD
☎ (07) 5543 6622 ✉ restaurant@albertriverwines.com.au
🌐 AlbertRiverWines.com.au



Award winning wines and dining with a view... Enjoy a sumptuous lunch with Quality Estate Wines on our Verandah Restaurant overlooking picturesque Tamborine Mountain. Cellar Door open 7 days a week. Restaurant open Wednesday to Sunday for lunch.



FORTITUDE BREWING COMPANY

165 - 185 Long Road, 'Gallery Walk'
☎ (07) 5545 4273 🌐 FortitudeBrewing.com.au



Have you got Fortitude... Beers that are full-bodied, well-balanced and crafted to perfection. The perfect spot for a lazy afternoon. Delicious food fresh from our kitchen, and free live music on weekends, Fortitude is just the place to enjoy some home-style hospitality. Please check our website for Opening Hours.

Dandelions3

Unique Style from the Scenic Rim Bringing you eco-friendly, sustainable products made right here in the Scenic Rim by our rich talent of local manufacturers. Children's clothing, natural skincare, wellbeing products, eco friendly kitchenware, handmade pottery and much more.

📍 108 Long Road "Gallery Walk"
 ☎️ 0404 056 036 📧 info@dandelions3.com.au
 🌐 Dandelions3.com.au



Matthew West Jewellery Studio

Beautiful, Unique, Hand-Crafted... Talk directly with Jeweller Matthew who designs and hand-makes exquisite jewellery in his on-site workshop. Matthew would love to show you his interesting array of beautiful affordable pieces for all occasions.

📍 1/110 Long Road "Gallery Walk"
 ☎️ (07) 5545 4355
 🌐 MWJewelleryStudio



Bygone Days

Come and be delighted. A vast range of local & Australian-made. Including 'Vintage', 'Antique and collectable' & newly sourced items with an "Old World" charm. Nostalgic Décor products, exotic embellishments, Mens gifts, soaps, candles, jewellery, linen, lace, millinery flowers and so much more! Open 7 days 10am to 4pm.

📍 2 / 112 Long Road "Gallery Walk"
 ☎️ 0402 786 227 📧 bygonedays@tpg.com.au
 🌐 BygoneDays.co



Whistling Duck Village

A little shopping adventure in its own right.

- The Quillow Shop - Quilting, Handmade Crafts, Gifts
- Witchscents - Eco Soaps, Botanicals + Body Care made in store
- Shamans of the Tao - Holistic Health, Healing Instruments
- The Treat Shop - Amazing variety of gourmet foods & chocolates
- Charlie & Me - This is the shop your friends told you about

📍 120 Long Road "Gallery Walk"



Cinnamon Bun Café

Freshly made on premises - amazing CINNAMON BUNS, Raspberry Jam, Finger Lime & Custard. Segafredo Coffee. How about a delicious OUTBACK PIE. Also yummy hot fresh DONUTS & CHURROS with cinnamon sugar cooked to order. Perfect to go with your favourite cuppa of Segafredo coffee. Open 10am - 4pm Mon to Fri and 9am - 5pm Sat and Sun.

📍 134 Long Road "Gallery Walk"
 ☎️ 0417 411 680
 🌐 facebook.com/Cinnamon-Bun-Cafe-101779614973918/



Angela's Pantry

A unique little shop... Filled with jams, chutneys, honey, dukkah, spices and fresh cheeses. Bespoke timber pieces, ceramics and pottery - many locally made. Custom hampers made to order. Supporting Locally and Australian Made.

📍 4/136 Long Road "Gallery Walk"
 ☎️ (07) 5545 0114 or 0416 156 771
 📧 angelamacinnes@yahoo.com

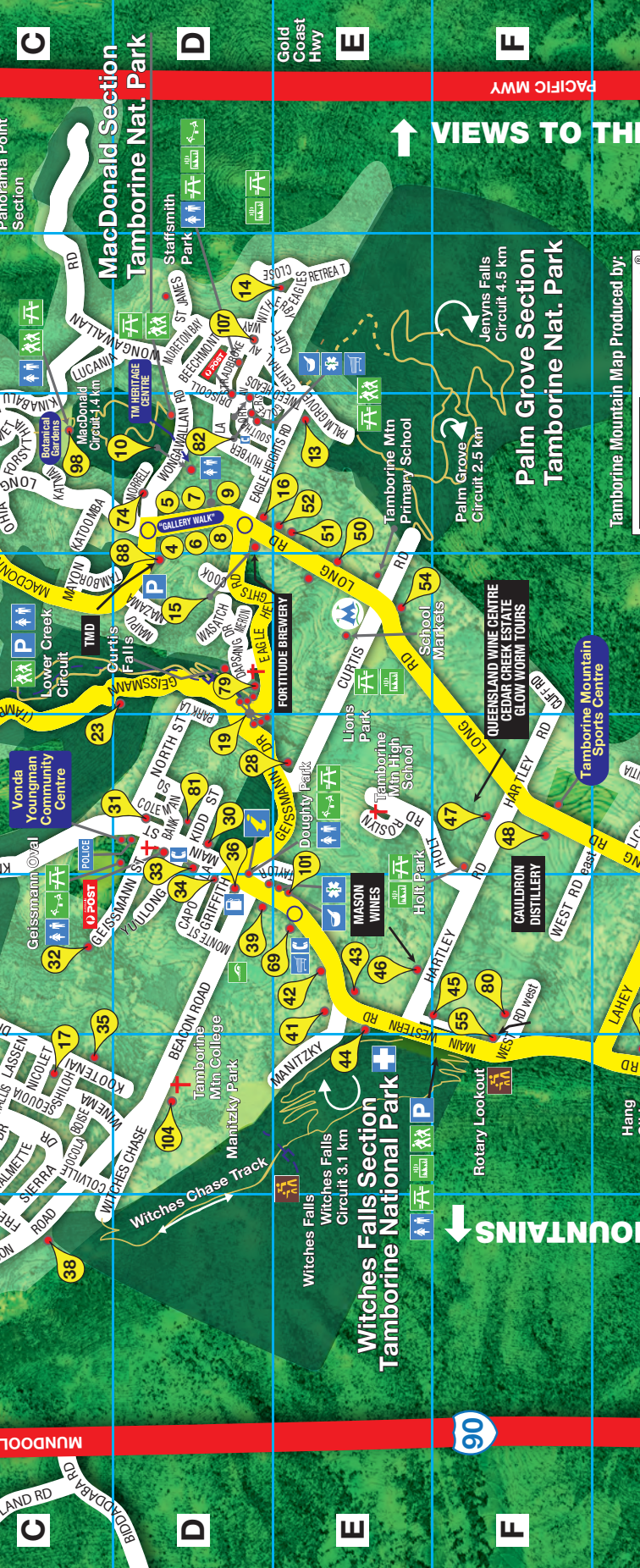


Castle Glen

Wines, Fortified Wines and Liqueurs Chemical and preservative free table, sparkling and fortified wines, unique fruit wines, a comprehensive range of traditional English style liqueurs and creme liqueurs. Parking around the back and disabled parking at the front. Open 7 days 10am to 5pm.

📍 138 Long Road "Gallery Walk"
 ☎️ (07) 5545 4282 📧 tamborine@castleglenaustralia.com
 🌐 CastleGlenAustralia.com.au





**Macdonald Section
Tamborine Nat. Park**

**Witches Falls Section
Tamborine National Park**

**Palm Grove Section
Tamborine Nat. Park**

Witches Falls
Witches Falls
Circuit 3.1 km

Palm Grove
Palm Grove
Circuit 2.5 km

Jenyns Falls
Jenyns Falls
Circuit 4.5 km

↑ **VIEWS TO THE MOUNTAINS**

↓ MOUNTAINS



Tamborine Mountain Map Produced by:

PACIFIC MWY

Gold Coast Hwy

Panorama Point Section

BROADBAR RD

Hang

Tamborine Mountain Sports Centre

90



THE GOLD COAST ↑

DISCOVER Tamborine Mountain

The Green behind the Gold.

www.EscapeToTamborineMountain.com.au
 M: 0477 630 654
 E: info@EscapeToTamborineMountain.com.au

Height above sea level approx. 560 metres

Blue Gridline spacing approx. 1000 metres

VIEWS TO THE MOUNTAIN ↓

- Hiking trail / walks
- Picnic Tables
- BBQ
- Play Equipment
- Information Centre
- Fuel Station
- Groceries
- Ambulance
- Medical Centre
- Pharmacy
- Camp Site

BEAUDESERT - NERANG ROAD

M1

Smith St to Southport

To Guanabara

St. Bernard's Primary School

Tamborine Mountain Show Grounds

Esme Street Park Environmental Trail

TM COFFEE PLANTATION

BIRCHGROVE NURSERY & CAFE

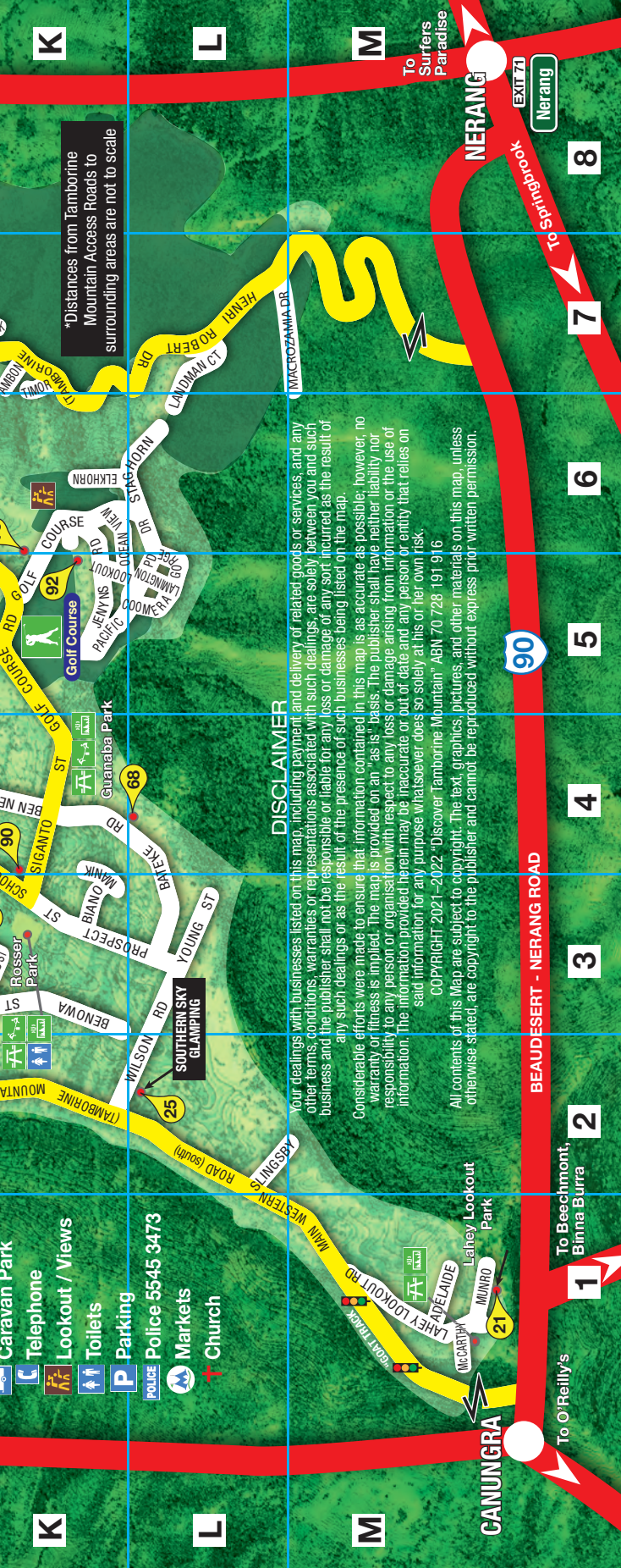
ST BERNARDS HOTEL

THE POLISH PLACE

Gliders

Zamia Grove National Park

- Caravan Park
- Telephone
- Lookout / Views
- Toilets
- Parking
- Police 5545 3473
- Markets
- Church



*Distances from Tamborine Mountain Access Roads to surrounding areas are not to scale

DISCLAIMER

Your dealings with businesses listed on this map, including payment and delivery of related goods or services, and any other terms, conditions, warranties or representations associated with such dealings, are solely between you and such business and the publisher shall not be responsible or liable for any loss or damage of any sort incurred as the result of any such dealings or as the result of the presence of such businesses being listed on the map.

Considerable efforts were made to ensure that information contained in this map is as accurate as possible; however, no warranty or fitness is implied. The map is provided on an "as is" basis. The publisher shall have neither liability nor responsibility to any person or organisation with respect to any loss or damage arising from information or the use of information. The information provided herein may be inaccurate or out of date and any person or entity that relies on said information for any purpose whatsoever does so solely at his or her own risk.

COPYRIGHT 2021-2022 "Discover Tamborine Mountain" ABN 70 728 191 916

All contents of this Map are subject to copyright. The text, graphics, pictures, and other materials on this map, unless otherwise stated, are copyright to the publisher and cannot be reproduced without express prior written permission.

NERANG
EXIT 71
Nerang

BEAUDESERT - NERANG ROAD

CANUNGRA

To O'Reilly's

To Beechmont, Binna Burra

To Surfers Paradise

To Springbrook



Crystal Mountain

Crystals, Minerals, Fossils, Gemstones and Australian Designer Jewellery. Everything from rare museum quality specimens and billion year old fossils to our truly stunning range of the finest quality handcrafted Gemstone jewellery. Afterpay, Zippay & Humm available. Open 7 days, 10am-4pm.

📍 Shop A / 119 Long Road "Gallery Walk"
 ☎️ 0411 568 153
 🌐 CrystalMountain.com.au



Chocolates on Gallery Walk

Tantalize your taste buds!

A huge range of Australian hand-made chocolates, as well as locally made gourmet chocolate indulgences. Gift boxes, Bonbonniere, giftware and all things chocolate.

📍 3/119 Long Road "Gallery Walk"
 ☎️ (07) 5545 0548
 📱 ChocolatesOnGallery



The Truffle Discovery Centre

Queensland's first French Black Truffle experience! The best of local, regional and globally sourced gourmet foods and gifts including truffles, truffle infused oils, honeys, salts, mustards, salsa & aioli sauces, condiments, preserves, jams and novelty gift lines. Also visit our truffiere and store in Stanthorpe.

📍 133 Long Road "Gallery Walk"
 ☎️ 0467 255 337
 🌐 TruffleDiscoveryCentre.com.au



Granny Macs Fudge Store & Café

Fudge, Confection, Preserves, Ice-Cream, Souvenirs... Sample over 40 flavours of our famous fudge made in store! Confection of yesteryear, UK & Dutch confection, licorice, ginger, gluten & sugar free products & souvenirs. Order online - fudge gift boxes sent by mail worldwide.

📍 139 Long Road "Gallery Walk"
 📧 info@grannymacs.com ☎️ (07) 5545 1999
 🌐 GrannyMacs.com



The Glass Studio

Gallery Walk's only working glass studio... Glass artist Karen and other world renowned local glass artists create unique "one of a kind" glass art pieces. We specialise in dichroic glass jewellery and all things glass. Buy 1 - GET 1 FREE. Now offering classes in cold, warm and hot glass mediums.

📍 145 Long Road, "Gallery Walk"
 ☎️ 0432 740 611 Open 364 days a year
 🌐 GlassStudio.net.au



Mumma Duck's Sweets and Treats

TAMBORINE MOUNTAIN ROCK CANDY

- Award-Winning Maleny Gelato and Sorbet
- Gourmet **Fudge** – try Redskin, Ferrero or Pineapple Lump!
- US / UK / AUST / NZ Chocolates, Sweets, Soft Drinks
- Frosty Boy Milk and Thick Shakes - 20 flavours
- Lindt Chocolate Drinks - Hot or Iced

📍 1/149 Long Road "Gallery Walk"
 🌐 MummaDucks.com.au



Funny Honey

Beekeeper owned and operated! Pure Australian highest grade Manuka Honey 360+MGO to 1600+MGO tested and unprocessed, fresh local raw honey as well as Macadamia Honey, Ironbark, Leatherwood and Honeycomb honey available in store. We love our customers!

📍 Shop B 159 Long Road, "Gallery Walk"
 ☎️ 0414 844 995 📧 sales@funnyhoney.com.au
 🌐 FunnyHoney.com.au



"GALLERY WALK WEST"

MACDONNELL RD



- 
- 
- Liqueurs, Spirits and Cocktails* – TAMBORINE MOUNTAIN DISTILLERY
Bespoke Tattoos in a Luxury Treetop Studio – JUNGLE INK TATTOO
Homewares, Clothing, Spiritual Books – LONG ROAD COLLECTIVE
Bespoke Magickal Tools, Medicine Pieces – VILLAGE WITCH ALCHEMY
(see left) Crystals, Fossils, Gemstones & Jewellery – CRYSTAL MOUNTAIN
Cellar Door – HERITAGE ESTATE WINES
(see left) Chocolates, Café, Gifts – CHOCOLATES ON GALLERY WALK
Earth Potions, Folk Herbal Remedies – BOHEMIAN FARMHOUSE
Impact Art, Created to Inspire – E360 DESIGN
Beautifully Handmade Items & Gifts – THE HANDMADE COTTAGE
Fashion with a Difference – WHISPERS FASHION HOUSE
Woodwork, Aboriginal Souvenirs, Jewellery, Artefacts – MODERN CLASSIC
(see left) Truffles, Gourmet Food, Novelty Gifts – THE TRUFFLE DISCOVERY CENTRE
French Patisserie and Deli – GABLE LANE PATISSERIE
Organic Hair and Skin Care – ARIA HAIR
Breakfast, Light Lunches, Coffee, Cake, Ice Cream – CAFE BRAVO
(see left) Fudge, Lollies, Macadamias, Icecream, Café – GRANNY MACS
Greek Restaurant – GEORGES PARAGON
(see page 2) Clocks, German Souvenirs – GERMAN CUCKOO CLOCK NEST
(see left) Art in Glass Creations – THE GLASS STUDIO
Café, Breakfast & Lunch, Ice Cream & Chocolates – LE CHILE CAFE
Treasures from Mother Earth – ORGANIK TEMP
(see left and page 11) Gelato, Sorbet, Fudge, Sweets – MUMMA DUCKS SWEETS & TREATS
Ladies Fashion for the mature age and up – CLOTHING & COLLECTABLES
Sandwiches, Gelato, Pies, Cakes – MOUNTAIN BURGER
Coffee, Light Meals and More – CAFE I
Clothing with a difference – TRIBAL ALI
Personal Growth, Wellness & Relaxation – HEART OF T
Light Meals and Refreshments – CAFE ON T
(see left) Local and Manuka Honey – FUN
Original hand-built pottery creations – THE LITTLE ROTUND
Home Wares, Gifts, Accessories – JAKAMA
Crystal and Home Décor – LYRAN
Biltong, Jerky, Dried Meats – THE BILTONG & JERKY BR
Coffee, Light Lunches using Local Produce – THE TREEHOUSE



To Main Street EAGLE HEIGHTS RD

Cheese Tasting, Sales & Factory – WITCHES CHASE CHEESE FACTORY

(See Pages 4 & 20) Beer Brewery, Pizza – FORTITUDE BEER BREWING COMPANY

DISCOVER **Tamborine Mountain**

"GALLERY WALK EAST"



WONGAWALLAN RD

TAMBORINE MOUNTAIN HERITAGE CENTRE

(See Pages 10 and 11) →



DESWEPT & INTERESTING – *Designer Fashion, Art and Furniture*

THE MONKEY TREE – *Restaurant and Bar*

THE DANDELIONS3 – *Unique Style from the Scenic Rim (see right)*

MATTHEW WEST JEWELLERY STUDIO – *Jewellery Repair and Manufacturing (see right)*

THE CAPANART GALLERY – *Quality Local & Investment Art*

TAMBORINE TEA – *Tea, Teapots, Coffee Beans, Gifts*

THE GALLERY CAFE – *Café, Light Lunches, Coffee (see page 12)*

BYGONE DAYS – *Handmade, Vintage, Antiques & Collectables (see right)*

THE QUILLLOW SHOP – *Quilting, Hand Made Crafts, Gifts (see right)*

WITCHSCENTS ORGANICS – *Organic Soaps & Tea, Soy Candles, Skincare (see right)*

SHAMANS OF THE TAO – *Holistic Health, Healing Instruments (see right)*

THE TREAT SHOP – *Extensive Range of Gourmet Foods and Chocolates (see right)*

CHARLIE & ME – *Eclectic Gifts, Fashion & Home Wares (see right)*

MT TAMBORINE VINEYARD & WINERY – *Cellar Door, Restaurant*



PUBLIC TOILETS

MOUNTAIN HOUSE – *Artisan Inspired Designs & Australian Body Products*

MOUNT TAMBORINE BAZAAR – *Exotic Perfumes, Exquisite Perfume Bottles*

FUDGE HEAVEN – *Fudge, Ice Cream*

A WEE BIT O SCOTLAND – *Quality gifts and homewares sourced from Scotland*

CINNAMON BUN CAFÉ – *Delicious Donuts and Buns (see right)*

DIDJERIDOO WEAR – *Clothing*

ZEBRASTONE DESIGNS – *Australian, Hand Crafted, Gifts from Nature*

SMELLBOUND SOY MELTS – *A Journey Through Fragrance*

ANGELA'S PANTRY – *Locally Made Goodies (see right)*

CASTLE GLEN TAMBORINE MOUNTAIN – *Preservative-free Wines, Fortified Wines & Liqueurs (see right and page 21)*

LUNA MAGIC – *Oils, Décor, Gifts, Crystals*

WILD PLUM KITCHEN – *Café, Restaurant, Light Lunches*

EAGLE HEIGHTS RD

MASALA SHANTI - *Indian Restaurant*

AMORE B&B - *Bed & Breakfast Accommodation*

THE MANOR - *Restaurant, Accommodation, Functions*



QUEENSLAND WINE CENTRE

104-144 Hartley Road, Tamborine Mountain Qld 4272
 ☎ (07) 5545 1666 ✉ qwc@cedarcreekestate.com.au
 🌐 CedarCreekEstate.com.au



From bud burst to the bottle, our wines are a delight at any table. At the "Queensland Wine Centre" you will find the very best of Queensland's boutique wines. Our customer service is second to none, serving a unique range of the area to all nationalities visiting Tamborine Mountain. Call in to have your own unique wine tasting experience. For specials and discounts become a member by joining our Wine Club. Also on site are the Tamborine Mountain Glow Worm Caves, Frog Hollow and the Cedar Creek Estate Winery and Restaurant. Open 10 am-4 pm daily.



CASTLE GLEN

138 Long Road Tamborine Mountain 'Gallery Walk'
 ☎ (07) 5545 4282 ✉ tamborine@castleglenaustralia.com
 🌐 CastleGlenAustralia.com.au



Winery ▪ Liqueurs ▪ Brewery ▪ Distillery
Made locally in Queensland!

Visit the Award Winning Castle Glen for PRESERVATIVE-FREE and CHEMICAL-FREE alcohol products. No allergic reactions, headaches or hangovers!

Vegan friendly and Gluten-Free products for the discerning palate. Try Before You Buy.

Open 10am - 5:00pm 7 Days a week.



Birchgrove NURSERY & CAFÉ



BIRCHGROVE NURSERY & CAFÉ

38 Alpine Terrace, Tamborine Mountain QLD 4272

☎ (07) 5545 1042 🌐 BirchGroveNursery.com.au

Boutique Garden Centre Tamborine Mountain's largest and best range of modern and heritage roses, deciduous, blossom and autumn trees, superb camellias, magnolias grafted maples and many more plants and garden features. Gift Shop, Garden Art and Café on-site. Open 8.30am to 4pm – 7 days a week.



BOTTLE SHOPS



THIRSTY CAMEL
bottleshops

Thirsty Camel Bottle Shop

Quench your thirst
Large range of beer and spirits
Fine wine cellar

📍 IGA Centre, 17 Main Western Rd
Tamborine Mountain

☎ (07) 5545 3370

🌐 stbernardshotel.com



Eagle Heights Super Cellars

Your local independent bottle shop stocked with a fantastic range of Beer, Wine, Spirits and More.
Friendly staff with a focus on customer service.
Open 10am – 7pm daily.

📍 17 Southport Ave, Tamborine Mountain
☎ (07) 5545 4883

🌐 EagleHeightsHotel.com.au



AUTO SERVICES



Tamborine Mountain Auto Clinic

Tamborine Mountain Auto Clinic

- ▶ Locally Owned - Trust, Experience and Knowledge
- ▶ Repco Authorised Service Center and RACQ Approved Repairer
- ▶ Full range mechanical and electrical services and repairs
- ▶ Open 8am to 5pm Monday to Thursday, 8am to 3pm Friday

📍 41 Main Street, Tamborine Mountain
☎ (07) 5545 1214



TAMBORINE MOUNTAIN STREET DIRECTORY



ADELAIDE CRT	M2	GEISSMANN ST	D3	MYSTERY RD	I7
ALPINE TCE	J3	"GOAT TRACK"	M1	NICOLET DR	C2
AMBON CT	K7	GOLF COURSE RD	K5	NIPA CT	B6
APO CT	C6	GOLFERS CR	E6	NORMANDIE CT	H3
ARECA CT	B6	GRIFFITH ST	D3	NORTH ST	D4
ARENGA DR	G4	GUANABA RD	I7	OCEANVIEW PDE	L6
AVENS CT	A7	GUANABA RD	J6	OCOLA CT	C2
BALI CT	J7	HARTLEY RD	F3	OHIA CT	C6
BAMBLING RD	G1	HAYES RD	A8	ORCHIS DR	B7
BANK LA	D4	HENRI ROBERT DR	L7	PACIFIC PDE	L5
BARTLE RD	H2	HERMON RD	B7	PALM GROVE AV	E6
BATEKE RD	L4	HOLT RD	F4	PARADISE DR	B6
BEACON RD	D2	HUYBER LA	D6	PARK LA	D5
BEAUDESERT ST	K2	JAVA CT	J7	PLATT PL	C3
BEECHMONT AV	D7	JENYNS RD	K5	POWER PD	J2
BEN NEVIS ST	K4	JURA CT	A7	PROSPECT ST	K3
BENOWA ST	K3	JUSTIN AVE	H4	RAINER DR	A7
BIANO RD	K3	KAILAS CT	B8	ROMANA CT	I7
BISHOPP CT	H3	KAISER RD	J5	ROSLYN CT	E4
BOISE CT	C2	KALMIA CT	A7	SAGUARO CT	B7
BORNEO CT	J7	KAMET CT	C6	SALVIA DR	C7
CADE AV	H4	KATMAI CT	C6	SCHOOL RD	K3
CAPO LA	D3	KATOOMBA CR	C6	SEQUOIA DR	C2
CAREY PDE	H4	KENTIA RD	G4	SHASTA DR	C6
CARYOTA CT	G4	KESWICK RD	B1	SHILOH DR	C2
CAYAMBE CT	B6	KIDD ST	D4	SHORT ST	B6
CEDAR CK FALLS RD	A4	KINABALU DR	C6	SIERRA DR	C1
CELEBES CT	J7	KING PARROT CT	L8	SIGANTO ST	K4
CENTRAL AV	E7	KNOLL RD	C4	SLINGSBY RD	L2
CHALLIS ST	C2	KOOTENAI DR	C2	SOUTHPORT AV	D6
CHALMETTE DR	C2	LAHEY'S LOOKOUT RD	M1	ST. BERNARD ST	K3
CIBOLA DR	C2	LAHEY RD	G3	ST. JAMES CT	D7
CLIFF RD	G4	LAMINGTON PDE	L5	STAGHORN RD	L6
CLIFF RD	F5	LANDMAN CT	L7	STRADBROKE AV	D7
CLIFF WAY	E7	LASSEN DR	C2	SUMATRA CT	J7
COCOS ST	G4	LEONA CT	J7	SUMBA CT	J7
COLEMAN SQ	D4	LICUALA DR	G4	TAAL CT	B7
COLVILLE DR	C2	LOMBOK CT	K7	TABOR DR	C7
CONTOUR RD	B6	LONG RD	G4	TAMBORA CT	C5
COOK RD	D6	LONG RD	C6	TAMBORINE - OXFENFORD RD	A8
COOMERA GORGE DR	L5	LOOKOUT PDE	K5	TAMBORINE MTN RD	B4 / K2
CORYPHA CT	G4	LUCANIA CT	C7	TAMBORINE-NERANG RD	K7
CURTIS RD	E5	MACDONNELL RD	C5	TAYLOR LA	E4
DAPSANG DR	D5	MACROZAMIA DR	L7	TAYLOR ST	E4
DEMAVEND DR	A7	MADURA CT	J7	TETON CT	A7
DRISCOLL LA	D6	MAGNETIC DR	B7	THE SHELF RD	I3
EAGLE HEIGHTS RD	D5	MAIN ST	D4	TIMOR CT	K7
EAGLES CL	E7	MAIN WESTERN ROAD	H2	TOLIMA DR	A7
EAGLES RETREAT PL	E7	MAIN WESTERN RD south	L2	TWEED HEADS AV	E6
EDEN CT	B6	MAIPU CT	D5	WASATCH CT	D5
ELBERT CT	A6	MAKALU CT	A7	WEST RD east	F3
ELKHORN CT	K6	MANIKA CT	K4	WEST RD west	F3
EREBUS CT	B7	MANITZKY RD	E2	WHITE RD	I2
ESME ST	G4	MAYON CT	C5	WILDFLOWER CT	L8
FERN ST	K3	MAZAMA CT	D5	WILSON RD	L2
FLORES CT	J7	McCARTHY LA	M1	WINEMA DR	D2
FORAKER DR	B7	MERON CT	D5	WITCHES CH	D2
FORSYTHIA DR	C6	MONTE ST	D3	WITHERBY CR	E7
FREMONT DR	C1	MORETON BAY AV	D7	WONGAWALLAN RD	D6
"GALLERY WALK"	D6	MORRELL ST	D6	YOUNG ST	L3
GEISSMANN DR	E4	MUNRO CT	M1	YUULONG ST	D3

DISCLAIMER: The material contained in this guide has been thoroughly researched, assembled and included with all reasonable care and the greatest of diligence by the publisher and the designer. The publishers shall not be held responsible or liable for any costs, losses, damages and/or expenses incurred or sustained by any party relying on the material contained, incorporated and included in this "TM Map". Advertisements in this "TM Map" are the responsibility of the advertisers. Publishers and designers cannot accept responsibility for the contents or offers made. All information was correct at the time of print. All editorial, maps, photographs and design features appearing in the "TM Map" are the intellectual property of DTM, and as such are protected by copyright and may not be reproduced in any way or form without the prior written consent of DTM.



ACCOMMODATION



Wallaby Ridge Retreat

A Hidden Gem... Self contained accommodation, views and tranquility, perfect for a quiet escape. Easy access to Canungra, Tamborine and Lamington National Park. Plenty of birds and wildlife. Four Star Facilities.

88 Bambling Road, Wonglepong
 (07) 5543 4340
 WallabyRidge.com.au



Aaronlee Retreat

Delightful retreat offering breathtaking views from the very top and edge of the mountain. A variety of accommodation, some with spas and fire places, yet reasonably priced for Couples, Families and Seniors. Lawns, gardens, massages, pool, BBQ, ponies and picnic areas with views.

13 Munro Court, Tamborine Mountain
 (07) 5545 3121
 AaronleeRetreat.com.au

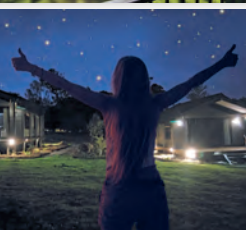


Mt Tamborine Motel

Come take in the view...

Perched on the edge of dramatic Guanaba Gorge, Mt Tamborine Motel offers 24 air-conditioned, comfortable and affordable rooms.

99 Alpine Terrace, Tamborine Mountain
 Vicki and Chris on (07) 5545 0088
 MtTamborineMotel.com.au



Southern Sky Glamping

Luxury Camping on Tamborine Mountain! Come & enjoy a breath of fresh air, awake to the sound of birds on 4 lush green acres, sleep comfortably under the Milky Way & enjoy a quiet night sky experience. Self contained kitchens, ensuite bathrooms & many more comforts of home under a canvas roof.

21-27 Wilson Rd, Tamborine Mountain Qld 4272
 0431 095 710 info@southernskyglamping.com.au
 SouthernSkyGlamping.com.au



Bearded Dragon Hotel

A gem of good old-fashioned Australian hospitality offering 18 accommodation rooms, most with ensuite spas. Bar and casual all-day dining restaurant, chef's blackboard and breakfasts. Host to Weddings and Special Events.

2-22 Tamborine Mountain Road, Tamborine
 (07) 5543 6888
 BeardedDragon.com.au
 [@beardeddragonhotel](https://www.instagram.com/beardeddragonhotel)

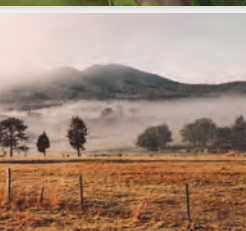


Mountain Sanctuary B&B

Luxury in the clouds...

Mountain Sanctuary rests on one acre of manicured gardens, with large spas and relaxing outlook from the private balcony of every suite. Centrally located 100m from two National Park entrances and 500m from Gallery Walk.

Cnr Eagle Heights Rd and Palm Grove Ave, TM
 (07) 5545 3297
 MountainSanctuary.com.au



Clandulla Cottages & Farmstay

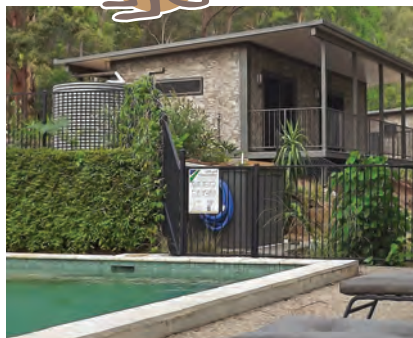
Self-contained Cottages. A picturesque, tranquil getaway at the foot of Tamborine Mountain. Affordable and luxurious holiday suites suitable for couples, families and small groups. Animal Feeding daily. Country Hospitality at its Best.

312 Boyland Road, Boyland (07) 5543 0990
 info@clandullacottages.com.au
 ClandullaCottages.com.au





WALLABY RIDGE RETREAT



WALLABY RIDGE RETREAT

88 Bambling Road, Wonglepong Qld 4275

☎ (07) 5543 4340 ✉ enquiries@wallabyridge.com.au

🌐 WallabyRidge.com.au



Peaceful bushland oasis catering for couples (and singles)...

Amazing mountain views, pool, outdoor spa, outdoor covered BBQ areas. Quirky local artwork and extensive garden. Birds and wildlife visit often. Self-contained facilities (with/out breakfast basket). Pillow top King beds (or twin share). Close to wineries, Canungra and short drive to Tamborine. Two styles of accommodation with our guest-house suites or our ecovillas enjoying an outlook to the forest. Short stay or holiday rates available. See our website for rates and specials.



SOUTHERN SKY GLAMPING

21-27 Wilson Rd, Tamborine Mountain Qld 4272

☎ 0431 095 710 ✉ info@southern skyglamping.com.au

🌐 SouthernSkyGlamping.com.au



Luxury camping on Tamborine Mountain...

All the comforts of home under a canvas roof!



ACCOMMODATION



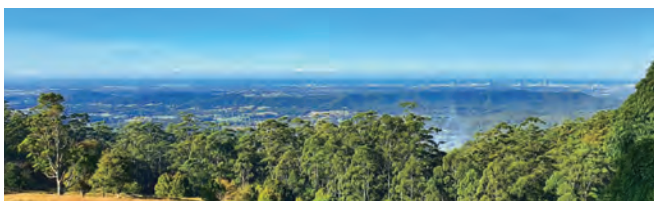
ESCARPMENT RETREAT AND DAY SPA

123 Alpine Terrace, Tamborine Mountain ☎ (07) 5545 3300

✉ escape@escarpment.com.au 🌐 Escarpment.com.au



Escape Experience Explore... Award winning rainforest sanctuary featuring romantic chalet style villas with canopied 4-post beds, log fireplaces, and decadent double spa baths, plus the "Edge House" family accommodation, Private Gold Class Cinema, a spectacular tree house common room and Day Spa.



SEAVIEW FARM RETREAT

112 Golf Course Road, Tamborine Mountain Qld 4272

☎ (07) 5545 0766 🌐 SeaViewFarmRetreat.com.au



Relax, rejuvenate, and unwind... The best of city and country combined. Luxurious self-contained private chalets with spa and fireplace. Enjoy the spectacular 180 degree view of the Gold Coast. Join us for a real country stay.



CAMELOT BOUTIQUE ACCOMMODATION

322 Main Western Road, Tamborine Mountain Qld 4272

☎ (07) 5545 4380

✉ info@camelotcottages.com.au

🌐 TamborineAccommodation.com.au



Discerning, Decadent and Divine...

We provide couples with that perfect ambiance enabling rapid de-stressing and recharging your emotional and mental fortitude.

- Modern Spa Cottages for Couples
- Discreet & spacious Queen en-suited rooms
- Central location – close to everything.



The Scenic Collection

The Scenic Collection has a selection of the best holiday homes on Tamborine Mountain.

Browse all our great offers & accommodation & book online, or call 07 5545 4000.

📍 10-12 Main Street, North Tamborine
☎ (07) 5545 4000

🌐 TheScenicCollection.com.au





The Ultimate Romantic Retreat



PETHERS RAINFOREST RETREAT

28B Geissmann Street, Tamborine Mountain QLD 4272

☎ (07) 5545 4577 ✉ retreat@pethers.com.au

🌐 Pethers.com.au



Relax and unwind in one of our spacious treehouses, complete with its own private spa for two, fireplace, lounge and dining area, kitchenette and 5-metre high glass windows that lead to a large outdoor balcony overlooking spectacular sub-tropical rainforest. Wake to the sounds of birds as the morning sun winds between huge eucalypts. Enjoy a massage, picnic in our avocado orchard or sample the delights of our restaurant while the natural beauty of our surrounds rejuvenates and refreshes



Avocado Sunset B&B

Luxury 4½ Star Bed & Breakfast accommodation with breathtaking views.

Escape to our cool "island in the sky" and leave your worries behind.

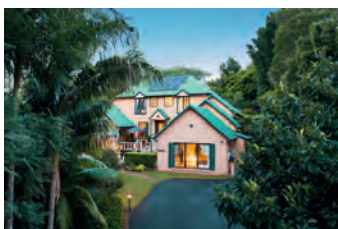
Four beautiful rooms open onto the large guest lounge with its cosy winter fire and stunning views.



📍 186 Beacon Road, North Tamborine

☎ 0472 675 040

🌐 AvocadoSunset.com.au



Villa Della Rosa B&B

A truly unique Mediterranean-styled bed & breakfast nestled in a wonderfully secluded corner, right on top of Tamborine Mountain, set in our own private rainforest garden. All rooms are luxuriously appointed, with spa ensembles, king beds and electric fireplaces.



📍 5 Platt Place, North Tamborine

☎ (07) 5545 3375

🌐 VillaDellaRosa.com.au





WEDDINGS



St Bernards Hotel

St Bernards is perfect for... Engagement Parties, Bridal Showers, Weddings, Wedding Anniversaries. Enjoy Spectacular Gorge Views, Beautiful Gardens, "Olde World" Ambience and Great Meals!

101 Alpine Terrace, Tamborine Mountain
 0417 802 157
 StBernardsHotel.com



Cedar Creek Estate Winery Weddings

Enjoy the ambiance of a Winery Wedding! The magic of a mountain wedding truly comes to life at "Cedar Creek Estate Winery" set on a stunning 22-acre estate. We offer Brides and Grooms a unique, romantic ceremony and reception location for this special day.

104-144 Hartley Road, Tamborine Mountain
 (07) 5545 1666
 weddings@cedarcreekestate.com.au
 CedarCreekEstate.com.au



WELLNESS



Spa Pamper Packages

Spa | Steam Room | Infrared Sauna | Ice Plunge | Mineral Pool | Spa Jet Capsule | Massage & Spa Pedicure chairs

Treatment Menu

Massage | Hot Stone Massage | Pure Fiji Body Treatments
Sothy's Facials Manicures and Pedicures

Treatment Packages for 2.5hr and 4.5 hours

075545 4751
 16 West Rd
Mount Tamborine
 Getaway Day Spa

Open Monday to Saturday 9am to 5pm
for Spa Pamper Packages and Treatments
Open Monday to Saturday 5pm to 8pm
for Private Spa Facilities bookings



Escarpment Retreat and Day Spa

An award-winning rainforest Day-spa...

Featuring world class organic products and a skillful combination of relaxation, remedial and deep tissue massage techniques tailored just for you. Open to the Public.

123 Alpine Terrace, Tamborine Mountain
 (07) 5545 3300
 escape@escarpment.com.au
 Escarpment.com.au





"Discover Tamborine Mountain Arts and Crafts"...

An art lover's paradise. Many artists choose to call Tamborine Mountain "home", and proudly exhibit their wide variety of sculptures, paintings, jewellery and a vast array of other art and craft items. Many gifts, antiques and collectables stores complement the locally made art.



Maki Horanai

Original pieces, signed and numbered prints cards & books produced by Maki and her partner, on handmade paper.

A fantastic world of dreams that exists both nowhere and everywhere, displaying a unique and imaginative combination of artistic sensibilities.

📍 314-332 Macdonnell Rd,
Tamborine Mountain Qld 4272
☎ 0424 960 817
🌐 MakiHoranai.com



Maki Horanai
@mountain dreams

Under the Greenwood Tree

For book and art lovers Independent Bookshop and Contemporary Art Gallery. A carefully curated collection of new books and art by local and Queensland artists. Author events and regular exhibitions. Open 10am - 4pm every day except Tues and Thurs. Orders welcome. Gift Vouchers available.

📍 Shop C 92 Main Western Rd, Tamborine Mountain
☎ (07) 5545 4448 or Mob: 0424 586 066
🌐 www.facebook.com/MtTamborineBooksArt/



Vintage Frills Antiques

Selling Divine and Vintage and Antique Treasures, Furniture and Found Objects

Vintage treasures of all shapes and sizes: from old grandfather clocks to ornate glasswork

📍 92 Main Western Rd, Tamborine Mountain
☎ Mob: 0423 500 303

🌐 www.facebook.com/Vintage-Frills-298860003606944



Margaret Goldsmith Art Gallery

Contemporary Paintings and Glass Works Margaret's work is semi realistic paintings mainly of the figure and portraiture, but also landscapes, animals and birds. Her work is often very colourful with a hint of humour. Open Fri, Sat & Sun 10am to 4pm and by appointment. Closed Thursdays.

📍 83 Bateke Road, Tamborine Mountain Qld 4272
☎ 0407 145 535 ✉ margold@onthenet.com.au
🌐 MargaretGoldsmithArtist.com.au



PJ POTTERY

Handmade Ceramics by Nicci Parry-Jones, Mt Tamborine.

PJ Pottery is a mix of useful and whimsical domestic ware and one-off collectable teapots.

Gallery open by appointment.

Pottery Tuition classes, workshops, private sessions.

✉ hello@pjpottery.com

🌐 pjpottery.com

📷 @pj_pottery





TAMBORINE MOUNTAIN



Market days are Fun Days...

On Tamborine Mountain you can visit three distinctively different markets happening every month, you are spoilt for choice - **there is something for everyone!**

Tamborine Mountain Country Markets

When and Where

The "Tamborine Mountain Country Markets" offer a huge range of fresh fruit and vegetables, wonderful locally produced cheeses, plants, herbs, flowers, coffee, arts and crafts, collectables, garden ornaments, clothing, a myriad of home made things and delicious temptations of all kinds. There is plenty of ready-to-eat food on offer, there's excellent coffee, poffertjes (Dutch pancakes), German sausages (try the "Knackwurst" with mustard – yum!) or be tempted by baked jacket potatoes or fresh corn on the cob.

For the kids there are pony and small "car" rides and a jumping castle, while the "big" kids check out the singer or performer on the

Tamborine Mountain School Ground Markets

When and Where

The "Tamborine Mountain School Ground Markets" are a true country village market in support of the local State Primary School P&C's fundraising efforts. They have become an institution for locals and mountain visitors alike. It could probably best be described as a mixture of a country market, a more traditional "flea market" and a huge but still local garage sale.

Many stall holders are local residents offering anything and everything no longer needed in their households. Kitchen utensils and accessories, crockery and cutlery, crystal ware and collectables, clothing and shoes, toys, sound records, books, tapes and DVDs, heaps of assorted bric-a-brac items – the range of items on offer

Local Producers' Market

When and Where

The "Local Producers' Market" is the local market for fresh, mostly organic fruit & vegetables. On offer are flowers, honey, nuts, herbs and plants, local fresh fruit and veggies, also preserves, plants, fruit-juice, coffee etc.

A wide variety of high quality, freshly picked, mainly organically grown produce is always available and changes with the seasons. Tamborine Mountain is the source of an enormous variety of horticultural produce such as avocados, kiwi fruit, rhubarb, vegetables and flowers.

There are many large, -specialist orchards on Tamborine Mountain,

MARKETS



Second Sunday of each month - 8am to 3pm at the Tamborine Mountain Showgrounds Cnr Main Western & Bartle Rd.

H2
MAP REF

gazebo stage, giving these markets a relaxing country atmosphere. Large shady trees keep you cool in summer, and some open areas allow you to soak in the sun on cooler days.

There is limited on-street parking all around "Main Western Road" as well as SES volunteer coordinated parking inside the grassy showground off Normandie Court.

The coolness and fresh air of Tamborine Mountain invites you to really enjoy the "Tamborine Mountain Country Markets" – it's a great day out for everyone!

 **0417 618 379**


Last Sunday of each month - 8am to 2pm at the corner of Long and Curtis Road.

E5
MAP REF

need to be seen to be believed. Also old tools, small items of furniture, paintings, vases, Australiana, leather work - the list goes on and on...

Also on offer are local fresh produce such as fruit and veggies, eggs, plants, nuts, soaps and cookies, freshly squeezed juices and of course, a good cup of coffee.

So come on up, find that special piece, fossick through the treasures, stock up on fresh local produce and most of all – enjoy your visit to Tamborine Mountain.

 **0402 527 241**

Every Sunday morning - 6.30am – 12pm. Next to the Tamborine Mountain Showgrounds 378-382 Main Western Road

H2
MAP REF

but much of the produce on offer comes from small farms or large residential blocks. Horticultural activities give Tamborine Mountain its green, unspoiled character, which is one of the main reasons for the large numbers of tourists that visit Tamborine Mountain time and again!

 info@greenshed.com.au |  www.greenshed.com.au





WATERFALLS



Many natural attractions greet the Tamborine Mountain visitor. A number of breathtakingly beautiful waterfalls are located all over the mountain and are often the reason why so many visitors return time after time. After prolonged periods of rain, waterfalls are at their most spectacular, but all flow year round. A bit of walking is always involved when visiting one of the many waterfalls on Tamborine Mountain. It is hard to pick any particular waterfall as being "the best" - all of the waterfalls have their own special beauty, and need to be seen to be appreciated!

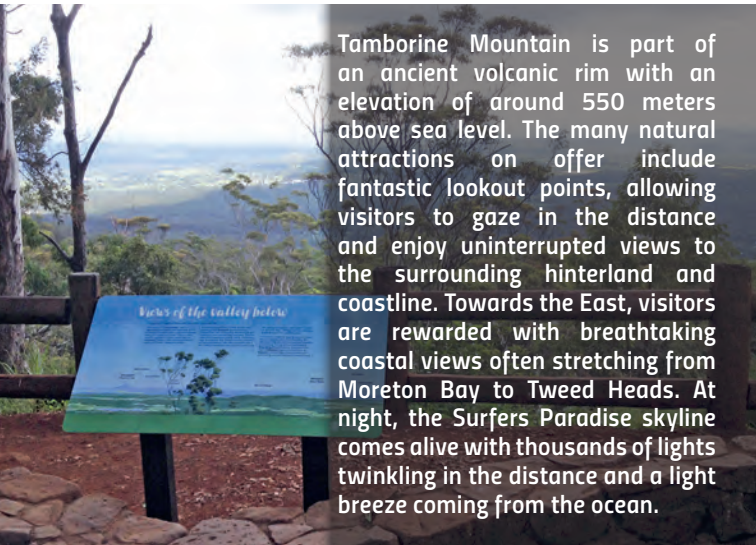
D5
MAP REF **"Curtis Falls"** Located in the heart of beautiful Tamborine Mountain, "Curtis Falls" is the only waterfall that can be viewed from the bottom. Being fed by a permanent creek, the falls run all year round. The walking track ends at a viewing platform overlooking a large rock pool, with great views of the falls and the surrounding columnar basalt rock face.

A5
MAP REF **"Cedar Creek Falls"** A short stroll from the car park at the end of "Cedar Creek Falls Road" provides access to Cedar Creek and some of its spectacular cascades, waterfalls and rock pools. Visitors pass a couple of rewarding lookouts and descend down into the open canyon via a sealed pathway. As Tamborine Mountain is not connected to town water, these are the only swimming holes on the mountain. Please observe all regulatory notices.

B3
MAP REF **"Cameron Falls"** The top of the falls is reached after a very enjoyable 30 minute walk starting at the "Knoll Road" lookout. A secure concrete bridge crosses "Sandy Creek", a viewing platform a few metres to the west offers great views inland as well as looking onto "Cameron Falls" to the east.

E3
MAP REF **"Witches Falls"** Being located within Queensland's first National Park, "Witches Falls" is one of the most popular waterfalls. Access is via the "Main Western Road" car parking area opposite "Hartley Road". Being located on the "Witches Chase" hiking track, the falls are best admired from the viewing platform which also offers great inland views.





Tamborine Mountain is part of an ancient volcanic rim with an elevation of around 550 meters above sea level. The many natural attractions on offer include fantastic lookout points, allowing visitors to gaze in the distance and enjoy uninterrupted views to the surrounding hinterland and coastline. Towards the East, visitors are rewarded with breathtaking coastal views often stretching from Moreton Bay to Tweed Heads. At night, the Surfers Paradise skyline comes alive with thousands of lights twinkling in the distance and a light breeze coming from the ocean.

INLAND LOOKOUTS

- B3** **"Knoll Road"** - Also a great picnic spot, well maintained and easily accessible.
MAP REF
- B2** **"Cameron Falls"** - 30 minute hike from "Knoll Road" lookout, views inland and onto the falls.
MAP REF
- B1** **"Beacon Road"** - Quiet and less frequented at the very end of "Beacon Road".
MAP REF
- E2** **"Witches Falls"** - 25 minute hike from "Main Western Road", views inland and onto the falls.
MAP REF
- F2** **"Rotary Lookout"** - Easily reached by car, right on "Main Western Road", with seating and binoculars.
MAP REF
- G2** **"Hang Gliders"** - Cleared escarpment section, popular hang glider launch site and top photography spot.
MAP REF

COASTAL VIEWS

- A8** **"Eagle Heights Resort"** - Offering truly uninterrupted views, plenty of parking and open to anyone.
MAP REF
- B8** **"Magnetic Drive"** - Views partly obstructed by trees, limited parking and large turning circle.
MAP REF
- G4** **"Licuala Drive"** - Park at "Justin Avenue" and stroll back uphill, watch out for traffic.
MAP REF
- J6** **"Guanaba Road"** - Take great care when parking and please consider resident's privacy.
MAP REF
- K6** **"Golf Course Road"** - Great views just a short walk away from where cars can be parked.
MAP REF





BBQs / PARKS /

Culinary delights on Tamborine Mountain often mean enjoying a BBQ or picnic in one of the many parks and designated picnic areas. There are a huge number of quiet and secluded picnic areas, some sheltered, some with views, some with children's playgrounds, some with wood or electric BBQs. However you imagine your ideal picnic spot - you are bound to find it on Tamborine Mountain.

MAP GRID

PARK AREA FACILITIES

A4

Cedar Creek Falls:

- near carpark



FLAT GRASSY AREA

-at boardwalk



LARGE SHELTER / FLAT GRASSY AREA

B3

The Knoll:



LARGE SHELTER / LOOKOUT / LOOKOUT / BENCH

C3

Geissmann Oval:



LARGE SHELTER / SOCCER FIELD / SKATE PARK

D4

Doughty Park:



2 BENCHES

D7

Staffsmith Park:



DOG LEASH FREE AREA / EXERCISE EQUIPMENT / LARGE GRASSY AREA

E5

Lions Park:



LARGE GRASSY AREA

K3

Rosser Park:



BENCH

K4

Guanaba Park:



BENCH

M1

Lahey Lookout Park:



HEX GAZEBO / TELECOM TOWER



PLAYGROUNDS



LEGEND



OPEN PICNIC GROUNDS



SHELTERED PICNIC GROUNDS



WOOD BBQ's



ELECTRIC / GAS BBQ's



CHILDREN'S PLAYGROUND



OTHER FACILITIES



TOILETS



MAP LOCATION

DESCRIPTION

Located at the start of the walking trail to "Cedar Creek Falls", there are two distinctly separate picnic areas. The first one is closer to the car park and offers plenty of room and facilities. The second area is reached after approximately two hundred metres walk on a sealed path, just to the right of the beginning of the board walk that leads to the falls.

Also a popular lookout, the picnic area at "The Knoll" is beautifully laid out and offers every possible facility including large picnic shelters, electric BBQs and plenty of parking. The "Sandy Creek" circuit walking trail incorporating "Cameron Falls" starts just left of the lookout.

A popular area for sporting activities, Geissmann Oval is centrally located just off "Main Street" in North Tamborine. Heaps of picnic facilities and within walking distance of shops, the oval is good for families and larger groups wanting a bit of space away from traffic and noise.

This small park is located within the busy North Tamborine shopping precinct, just a few metres off "Main Western Road". It offers limited children's playground equipment and picnic facilities. Due to the proximity of traffic, children need to be supervised at all times. Here you will also find the Visitor Information Centre.

Featuring the Mountain's largest children's playground (fully fenced and covered with shade cloth), this park offers great facilities such as a dog leash free area (also fully fenced) and a 7-station exercise track.

Offering basic picnic facilities, the "Lions" Park has plenty of room for the kids to roam around. Large trees provide shade on hot days and cooking can be done on a number of wood-fired BBQ's.

Just across the road from "Gabby's Café" and the "St Bernards Shopping Village", this park is easily accessible and well visited, offering sheltered picnic settings and wood fired BBQ's.

Just past the Golf Course on the left side of the road when heading up the mountain, "Guanaba Park" is a great area for kids with good playground equipment and space for games of all kinds.

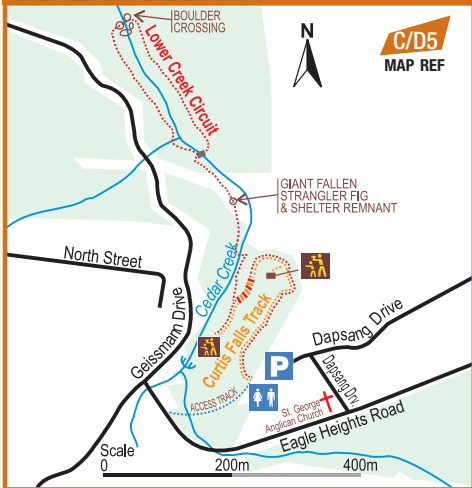
At the southernmost point of Tamborine Mountain this was once a very popular lookout area including a viewing tower to give early settlers advance warnings of approaching bush fires. With the tower now gone and trees obstructing the views, this small park is now a quiet picnic area, offering a variety of facilities.





WALKING TRACKS IN THE

JOALAH SECTION



Access:

From both Eagle Heights Road via a 400m track and from Dapsang Drive.

CEDAR CREEK SECTION



Access:

This section of the park is easily reached via Tamborine Mountain Road. Heading up the mountain from Tamborine Village, the turn-off to "Cedar Creek Falls Road" is just past the information map stopping bay on the left, on the same sharp right bend as the turn-off to "Thunderbird Park".

WITCHES FALLS SECTION



Access:

The start of the walking trail is easily accessible off "main Western Road". For the "Witches Chase Track" turn into Beacon Road at the local servo, further down keep left at the fork taking the aptly named road "Witches Chase". Car parking is at the start of the walk where the road turns sharply right to become Colville Drive.

TAMBORINE NATIONAL PARK

DESCRIPTION

D5 **CURTIS FALLS**
MAP REF 1.5km return, moderate grade with some steeper sections, allow about 60 minutes.

The track begins in wet eucalyptus forest beneath towering flooded gums. You will notice a drop in temperature as this turns into lush rainforest. The track gradually descends to Cedar Creek, turn left to reach the viewing platform overlooking a large rock pool, with great views of "Curtis Falls" and the surrounding columnar basalt rock face.

D/C5 **JOALAH CIRCUIT**
MAP REF 4.2 km return, allow about 1 hour, moderate grade.

Instead of heading back from Curtis Falls, you can follow the piccabeen palm-fringed creek which starts at Curtis Falls to the beginning of the circuit, passing several smaller cascades. Starting the circuit walking left you will soon cross Cedar Creek. The track passes a clearing which was created by a fallen giant strangler fig. Walk the lower circuit in an anti-clockwise direction. Eventually you will reach an easy hop-over boulder creek crossing, and then the track returns left towards Curtis Falls.

DESCRIPTION

A5 **CEDAR CREEK FALLS LOOKOUT**
MAP REF 500m return to lookout, allow about 15 minutes, easy grade.

This flat track from the car park to the lookout is suitable for strollers and has access for assisted wheelchairs. The lookout at the end of the walk offers nice views of the waterfalls, cascades and a series of rock pools popular with swimmers. Car parking is limited during busy periods.

A5 **CEDAR CREEK FALLS ROCK POOLS**
MAP REF 900m return from lookout, allow about 30 minutes, moderate grade.

This track provides access to Cedar Creek and some of its spectacular cascades, waterfalls and rock pools. Walkers descend down through open forest and dry rainforest and arrive at these popular swimming holes after crossing extensive jumbled rock scree slopes just before the creek.

Access to the swimming holes is easy via slope rock shelves, care needs to be taken as these rocks can be slippery. Jumping from the cliffs is strictly prohibited, due to submerged rocks and other hazards. The water can be quiet cold, even in the peak of summer.

DESCRIPTION

E2 **WITCHES FALLS CIRCUIT**
MAP REF 3.1 km, allow about 1 hour, moderate grade.

The southern start of the track descends down the steep mountain side through open forest, allowing great views. It flattens out and continues through a stretch of seasonal lagoons. "Witches Falls" are reached just past the northern return track T-junction. Return via the northern exit track zigzagging up the mountain through dense rainforest.

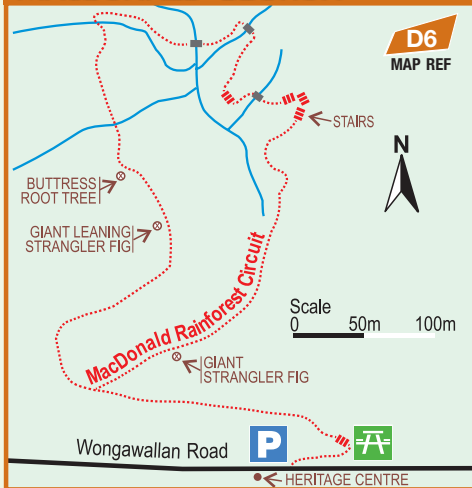
D1-2 **WITCHES CHASE TRACK**
MAP REF 2.7 km return, moderate grade.

This walk also starts at "Main Western Road". It descends down the mountain using the northern track to the "Witches Falls" waterfall and lookout, and continues along the cliff through rainforest, passing a huge boulder field making for a slightly more challenging terrain towards Beacon Road. Once you passed the boulder field either turn around and head back, or keep following the track until you reach the car park at the end of "Witches Chase".



WALKING TRACKS IN THE

MACDONALD SECTION

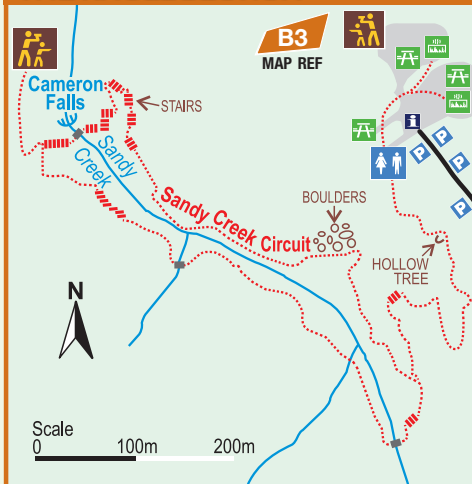


Access:

Turn into "Wongawallan Rd" at the upper roundabout of "Gallery Walk", parking is about 200 metres down the road on the left opposite the "Heritage Centre".

This precious tract of subtropical rainforest was named after Miss Jessie MacDonald, who generously donated part of this area to become a National Park in 1933.

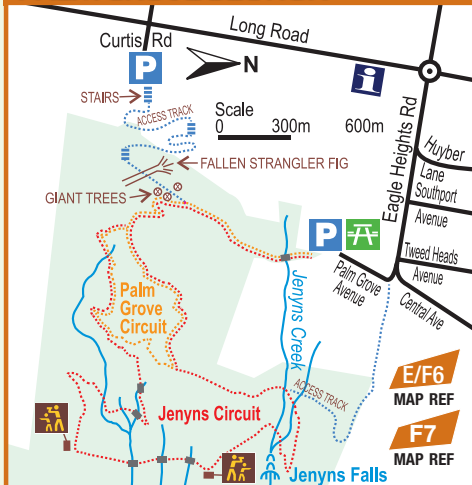
THE KNOLL SECTION



Access:

In North Tamborine, turn off "Main Western Road" into "Main Street", continue past the shops and the residential area where it becomes "Knoll Road", keep left when the road forks.

PALM GROVE SECTION



Access:

For ease of parking, use either "Palm Grove Road" or "Curtis Falls Road". Alternatively, this walking area can be reached by using an access track starting at the corner of Eagle Heights Road and Palm Grove Road.

TAMBORINE NATIONAL PARK

DESCRIPTION

D6 MACDONALD CIRCUIT

MAP REF 1.4km return, allow 35 minutes, easy grade.

This relatively flat loop track passes through rainforest with towering strangler figs, beautiful Piccabeen Palm Groves and tall trees with vines and ferns. This walk is popular with bird watchers, and offers visitors a quiet rainforest walk away from street noise and crowds.

The circuit is easy to navigate and very enjoyable. It is suitable for all ages, and often offers cool relief in the warmer summer months.

For updates and a printable version of these maps go to:

EscapeToTamborineMountain.com.au



DESCRIPTION

B3 SANDY CREEK / CAMERON FALLS CIRCUIT

MAP REF 2.6 km return, allow 1 hour, easy grade.

The track descends from the car park to the creek level through transitional rainforest with large flooded gums and Piccabeen Groves. Large black skink lizards can often be seen sunning themselves on this track.

Turn right when reaching the Sandy Creek circuit, and follow the gently sloping track until the track turns sharply left, continuing along the cliff edge. You will soon reach the top of Cameron Falls via a concrete bridge crossing Sandy Creek, offering spectacular views to Mount Flinders and Brisbane.

A branch track to Cameron Falls Lookout just past the bridge enables you to truly appreciate the natural beauty of this waterfall. Complete the circuit by continuing right when returning from the branch track, crossing Sandy Creek shortly before reaching the uphill track back to the car parking area.

DESCRIPTION

E/F6 PALM GROVE CIRCUIT

MAP REF 2.5km return, allow 1 hour, easy grade.

Access via Curtis Road is recommended, as the access track itself offers many rewards to walkers such as giant strangler figs and amazing root formations. The track zigzags down the mountain before it flattens out to reach the beginning of the circuit. Pass peaceful palm groves and some fascinating fungi on the way.

F7 JENYNS CIRCUIT

MAP REF 4.5km return, ALLOW 1½ hours, moderate grade.

Incorporating parts of the "Palm Grove Circuit", this circuit leads into drier eucalyptus forest. Hoop pines, brush box and grey gums abound and walkers will pass through a grove of ancient cycads. Watch for steep cliff edges and remain on the track at all times. Jenyns Falls and Burrawang Lookout tracks are currently closed.



BUMS ON SEATS

• DAY TOURS •

QUEENSLAND AND SOUTH AUSTRALIA

Specialising in...

Wine tours, Adventure tours,
Transfers and all round good
old fashioned Customer Service!

*Whatever you're heart desires,
we will move MOUNTAINS for you!*

 **CALL NOW**
It's not too late!
0412 988 846

salesqld@bumsonseats.com.au
www.BumsOnSeats.com.au